



# NEWSLETTER

WHITBY SECONDARY PARTNERSHIP

# NEWSLETTER

#18

## A-level Biology Field Trip



### Another fantastically successful A-level biology field trip before we broke up for Easter.

We undertook a variety of field work techniques including random quadrat sampling of sphagnum moss and continual line transect down a gradient to monitor species distribution. We had to dodge the adders that were happily soaking up the sun on Tuesday! On a very wet Wednesday the group chose to investigate the effect of stream velocity on mayfly nymph populations. They completed the Spearman's Rank statistical analysis and found that they could accept their hypothesis. We can happily report that the stream had an abundance of these indicator species which suggests a very clean water course. Well done biologists!





# Have your Say: Whitby Neighbourhood Plan

A group of local people have been commissioned by Whitby Town Council to create a neighbourhood plan for the Parish of Whitby. The steering group is made up of residents, town councillors and an expert consultant with the aim to guide future development around planning policies in the area over the next 15-20 years and can:

- » Protect local green spaces.
- » Encourage better designed places.
- » Bring forward housing that genuinely meets local needs.
- » Protect important heritage assets
- » Support businesses and employment
- » Improve infrastructure

The group is seeking to involve as many of the whole community as possible and would love to hear your views and opinions of the local community and the Parish of Whitby.

Have your say using the online survey: [Whitby Neighbourhood Plan Questionnaire \(google.com\)](#)

More information about the project can be found here: [Whitby Neighbourhood Plan - Whitby Community Network](#)



# NEWSLETTER

# Welcome

## Welcome from Ms Boyd



**Hello and welcome to the summer term. I hope you enjoyed Easter even though it seemed to be the wettest Easter holiday I can remember!**

It's great to see our pupils back. I've spent the morning in a "walking mock" exercise with Year 11. This is a great way to help them tackle exams. We've already done them in English, Geography and History so it was great to get stuck into some tough problems with some really keen pupils. Thank you so much for your support with revision and let us know if there is anything you need above the resources that we have shared.

I've also been busy liaising with people about transition for various groups of pupils. We have put a plan together and we will see our first pupils visiting the "Airy Hill" site next week. This is where our Year 7 and 8 will be based next year. We intend to have an open evening in the last week of June for anyone who would like to come and visit and then we will have our transition period for new pupils in the second week of July as normal. These are great events, particularly the music which Mrs Edmondson-Preedy and Mrs Beattie organise brilliantly.

On Monday we had a joint training day with colleagues from both schools. It was great to have a day concentrating on what goes on in the classroom. Our new instructional framework should bring some real consistency to all of our lessons and stretch all of our pupils. As it becomes more embedded we hope our pupils will be able to tell you all about it. Our training next year will be based around making our learning as interactive as we can while keeping that consistency.

**Ms Boyd**  
**Head of School**





# NEWSLETTER

# Welcome

## Welcome from Mr Nicholson



ESKDALE  
SCHOOL



As I write this the summer term has just begun today in the wind and rain! It was wet lunchtime driving even the hardest inside from their usual place on the 3G. I very much hope that there will be an improvement soon and speaking to one some of our cricketers on their way into school this morning, they would welcome the drier weather too.

I have been out and about around school today into lessons and on the whole pupils have settled back in well and learning is taking place. It is important for all pupils to approach their lessons with determination and grasp the opportunity presented in front of them. Each lesson, each day is a precious chance to learn and enhance their future. I would also ask again for parental support to ensure our pupils look smart during their time at school; taking a pride in being part of Eskdale School. A white shirt, school tie, a black or blue jumper, trousers or skirt with black shoes or trainers is what we expect. Should any families need any support with this then please contact the school office in confidence and we will help if we can.

There will be plenty of the usual summer activities for pupils to involve themselves in, alongside the transition programme to Whitby School which will begin this month. I look forward to seeing our pupils fully embrace those opportunities in the next few months. A new term gives everyone another new start!

**Mr Nicholson**  
Head of School

## Whitby School Improvement Update

On Monday 8 April before pupils returned to school for the new term there was a hive of activity with staff from both Eskdale and Caedmon working together on a number of important matters. Teachers and support staff were involved in collaborative work on teaching and learning, supporting SEND learners and the physical environment.

There was plenty of time given to colleagues to work together on curriculum ensuring that the pupils will have a uniform coverage of topics regardless of where they are currently at school. Preparation and planning for teaching in September are well underway and the consistent pedagogical approach being developed in both schools is central to the work going in to shape the teaching at Whitby School. Staff will continue to work together during the summer term.

We will be providing a School Improvement update as follows:

- Curriculum Developments - 23 April
- SEND Developments - 30 April
- Teaching and Learning Developments - 7 May
- Attendance Developments - 14 May
- Building Updates - 21 May



# NEWSLETTER

## Transition Activity Calendar

Dear parents and carers,

Please find below transition information for the term ahead. Letters with full details will be sent to you shortly. Colleagues are working together to create a mix of engaging activities designed to allow children to get to know each other and build friendships.

Transition Activity	Date
<b>Transition Activity Afternoon</b> » Current Year 7 (selected pupils only) » Parents will be contacted with the date their child is invited.	Thursday 18th April 2024 – Airy Hill or Wednesday 24th April – Airy Hill
<b>Meet the staff and enjoy refreshments event</b> » Current Year 7 Parents & Carers (selected pupils only) » Parents whose child is invited and can join us after school.	18th April 2024 3.30pm – Airy Hill or Wednesday 24th April – Airy Hill
<b>Transition Activity Afternoon</b> Current Year 7 Eskdale pupils visit to Airy Hill for a selection of mixed groups activities with Caedmon peers.	Thursday 2nd May – Airy Hill
<b>Meet the staff and enjoy refreshments event</b> » Parents and carers of Year 7 children visiting Airy Hill on 2nd May are invited to join us after school.	Thursday 2nd May 3.30pm – Airy Hill
<b>Transition Activity Afternoon</b> » Current Years 8, 9 & 10 (selected pupils only) » Parents will be contacted with the date their child is invited.	25th April 2024 – Prospect Hill Other visit dates to be confirmed – Prospect Hill
<b>Meet the staff and enjoy refreshments event</b> » Current Years 8, 9 & 10 Parents & Carers (selected pupils only) » Parents whose child is invited and can join us after school.	25th April 2024 3.30pm – Prospect Hill Other visit dates to be confirmed – Prospect Hill
<b>Transition Activities</b> » Current Years 8, 9 and 10 Eskdale pupils to visit Prospect Hill for a selection of mixed group activities with Caedmon peers.	Week commencing 7th May 2024
<b>Airy Hill Transition Evening Event</b> » Open to September 2024 Year 7s & Year 8s (current Year 6 & Year 7) plus their parents and carers.	Week commencing 24th June 2024 – Airy Hill
<b>Year 7 into Year 8 Transition Day</b> » Full Transition Activity Day	Week 8th July



# NEWSLETTER



## School News

### First reward winners announced

Congratulations to our weekly award winners from the last week of the Spring Term. They are:

#### Form Group Prize Draw

- 7A Elliot G
- 8A Ella C
- 8B Gabriella H
- 9A Maddie G
- 9B Aysha B
- 9C Kai B
- 10A Lauren K
- 10B Isaac B
- 11A Jet H
- 11B George W
- 11C Poppy W
- 11D Freddie L

#### Pupils of the Week

- Key Stage 3 - Joshua W
- Key Stage 4 - Alfie L

### Pupils of the week





# NEWSLETTER



## School News

### Karaoke All Star Battle Royale!

Mr Gaulter reports on two events which culminated in the last week of the Spring Term:

Thursday 21st of March saw an entertainment contest that dwarfed all 13 series of 'The Voice'!

Pupils from Eskdale School came together to raise funds for the Year 11 Prom and did not disappoint. Some sang in groups whilst others went solo and the range of song styles had everything from Rhianna to Carrie Underwood.



Madison B - the karaoke winner



In an electric atmosphere it was wonderful to see so many pupils, parents, ex-pupils and staff supporting each other and having such an enjoyable evening. The winners were Madison B who came first with her amazing rendition of 'Te Amo' by Rhianna; Mrs Hodgson came second with a superb performance of Pink's 'Try' and Naomi C's crew of Year 10s took third place with their stunning rendition of 'Before He Cheats' by Carrie Underwood. Competition was fierce and the other entries were by no means any less brilliant.

**Massive thanks to all staff and pupils that supported – together we raised a fantastic £276.33!**



# NEWSLETTER



## School News

### Easter Egg Competition

Mr Whelan ran an 'eggciting' Easter competition with our Year 7's. They had to create a Historical Character out of an egg, and we had some 'eggcellent' entries! Here is just a few of the 'cracking' characters, from Anne 'Boileyn' to Winston 'Eggy' Churchill.

An 'eggtremely' big well done to some of our winners, Mollie, Storm, Freya, Jessica and Holly.

All 'yolks' aside, well done to all pupils who entered.

Some entries for the Year 7 historical Easter egg competition.







# NEWSLETTER



## Rotary Club Technology Competition Winners (again, again, again!) as Mr Matthewson oversees another technology triumph

Once again, we proved we are the school to beat at the annual Rotary Club Technology Competition held at Whitby Spa.

The school has taken part for many years and over the past two years we have won the trophy in the Intermediate class. This year was another fantastic day and our pupils did us proud with the way they responded to the task.

We entered 3 teams, across 2 classes with the foundation team made up of pupils from Year 9, namely, Esme H, Zane D, Ruby S and Joshua L.



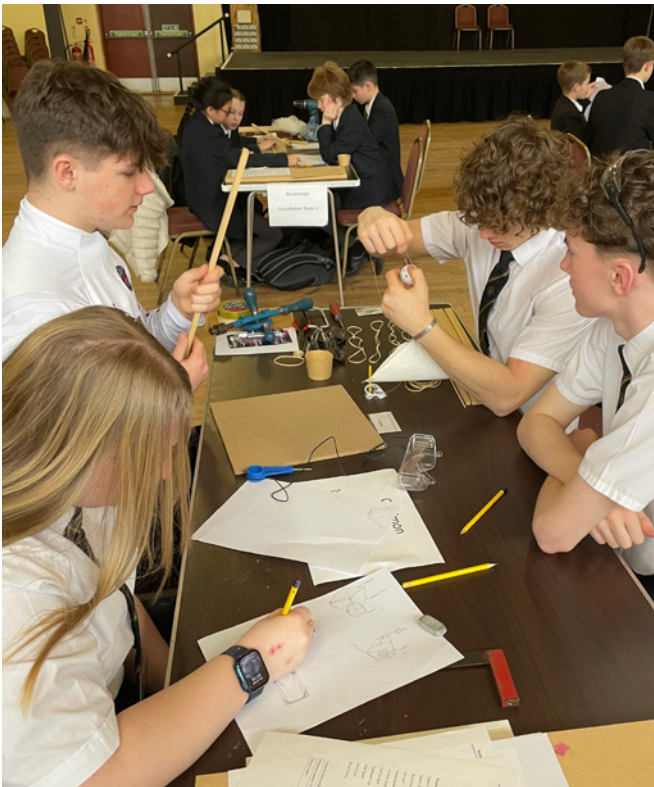
And our two intermediate teams were from Year 10, namely, Evie C, Emma W, Joey H and Rohan F. Whilst from Year 11 we had Luke S, Luca H, Freddie L and Ellie M.

It was the Year 11 team that scooped the top prize in their class to claim a hat-trick of wins for the school in that competition – some record indeed. Kudos also to the Year 10 team who came third in the same class.



# NEWSLETTER

## Annual Rotary Club Technology Tournament



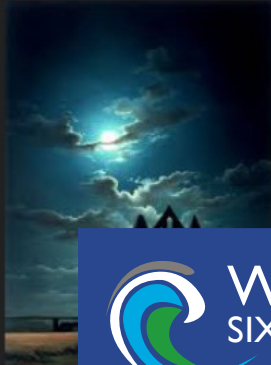


# NEWSLETTER

# The Key Motifs In Dracula

The Darkness, The Supernatural & Victorian Gothic Literature

**BY MAISIE PARKIN**



## School News

### A-level English


Our Year 12 students have been exploring context in relation to Dracula, a text we explore in A-level English literature. They produced some very professional PowerPoints on a range of topics from 'The role of Women to the Gothic genre' realised in the text.

If you are interested in studying A-level Literature at WSF check out our website and outstanding results, well above the national average!

### What Makes Victorian Gothic Literature?

'Dracula' is one of many novels that fit into the genre of 'Victorian Gothic Literature'. Examples consist of: 'The Picture of Dorian Gray', 'Frankenstein', 'The Woman in Black', 'Strange Case of Dr. Jekyll and Mr. Hyde' and many more. But what makes a novel a piece of Victorian gothic literature?

Victorian gothic literature includes themes of ruined castles and evil villains (Dracula), but also themes of the supernatural and uncanny in a recognised setting. Dracula uses the small seaside town of Whitby in order to create this eerie atmosphere. Dracula also attempts to create both psychological and physical terror which is a common occurrence in Victorian gothic literature. Stoker also experiments with themes of death, decay, and corruption which we see in the character of Lucy. Gothic Literature was loved by those in the Victorian era, usually expressing ideas against societal norms, and were seen as quite romantic pieces of literature.



### The 'New Woman'

The new woman was a feminist idea that emerged in the late 19th century and had a profound effect in the 20th century. They challenged gender roles met with hostility from men and women who objected to women's public presence and supposed decline in morality. Expressing autonomy and individuality, the new woman represented the tendency of young women at the turn of the century to reject their mothers' ways in favor of new, modern choices. Although many women participated in expanding women's public roles, women accepted and pressed for change in varying degrees. The symbol of the new woman was a conglomeration of aspects of many different women from across the nation who lived between the 1890s and the 1920s. Among them were glamorous performers, female athletes, "working girls" employed in city factories and rural textile mills, middle-class daughters entering higher education and professions formerly closed to women, and reformers involved in women's clubs, settlement houses, trade unions, and suffrage.





# NEWSLETTER

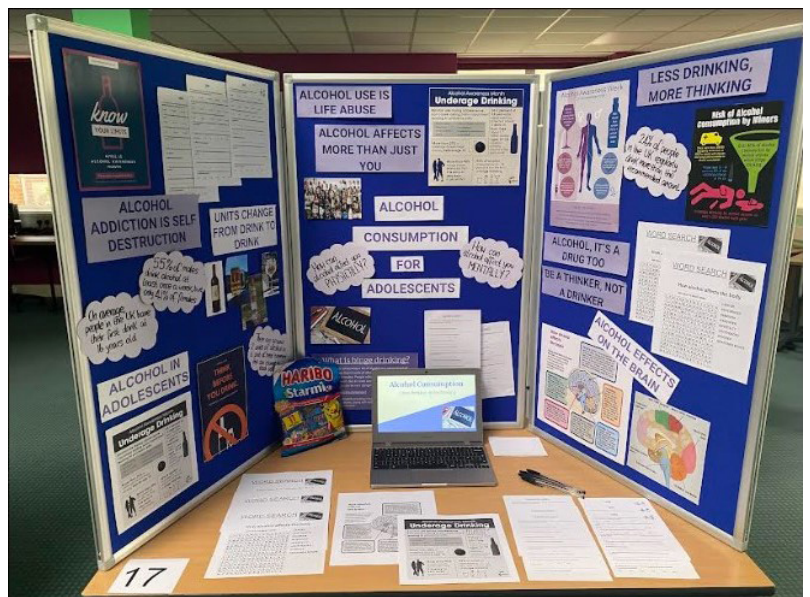


## School News

### Health and Social Care Health Promotion Day

On Wednesday 13 March, Year 11 pupils studying Health and Social Care hosted a health promotion event in school. They presented to Year 8 pupils in their PSHE lessons on the topics of alcohol consumption and physical activity.

Each pupil as part of their coursework element of the course, had to research one of the topics and then decide on how they would promote the topic to their chosen audience. They were assessed on their planning and preparation of the materials and content and this was then followed by the actual physical presentation of their work, looking at their communication skills, the engagement of the audience and how effective



their overall message was. The pupils produced outstanding work and were commended on their professionalism and positive attitude, as well as their interaction with pupils and staff members throughout the whole process. Well done Year 11, a very informative and delivered session.

**Mrs Gordon**  
**KS4 Director of Learning and Health and Social Care teacher**



# NEWSLETTER



## School News

### Sixth Form Trip

**WSF foundation learners had a trip out to Holey Molies for their end of term reward.**

Students had a wonderful day, with Emily taking the lead with a total score of 61.

We're pleased to welcome our students back after the Easter break ready for exam season.



### Kenya 2024

Camp International will be organising a parent meeting after the Easter holidays. I will be attending this meeting to formally introduce myself and I will also be discussing transport to and from Heathrow Airport. If you have any questions please contact me at [k.brown@ccwhitby.org](mailto:k.brown@ccwhitby.org)

**Mrs K Brown**



## School News

### Library Easter Competition

This term's library competition has been egg-scellent and pupils from all across KS3 entered - having to read and return three books to gain an entry ticket. Winners could then choose their prize from a veritable banquet of egg-citing chocolate offerings. Top prizes were donated by Justin's of Whitby and The Orange Frog Confectionary.

Congratulations to: Harry M, Jasmin B, Alana S, Ella C, Eva K, Aysha B, Maddie A, Ruby G, Evie C and Megan E!

Keep your eyes open for details on the summer competitions coming soon!



# NEWSLETTER



## Why study Biology at WSF

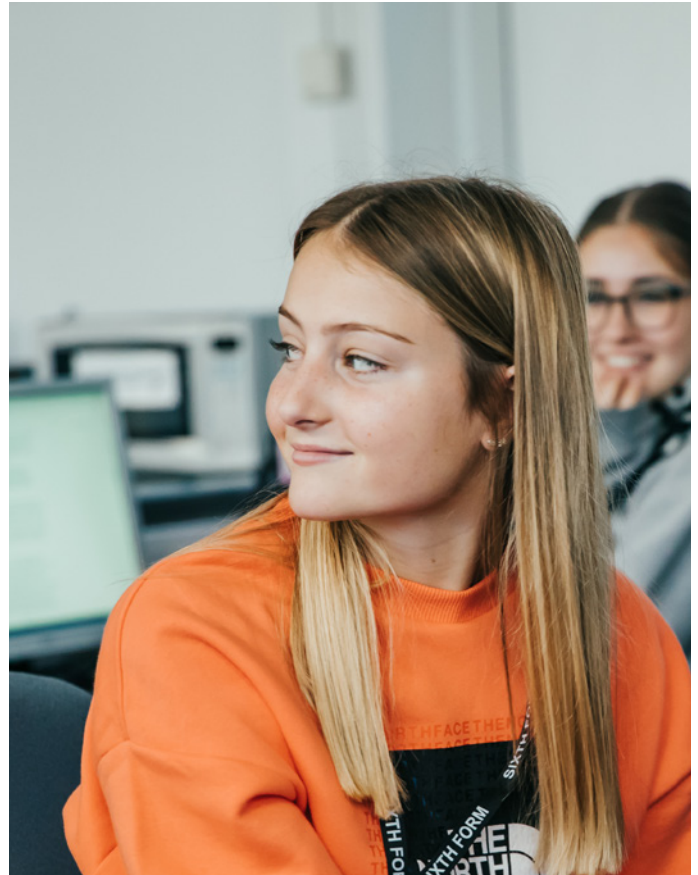
### What will I study?

You will explore biology in a hands-on way and discover how all living creatures interact in an eco-system. You will cover topics exploring how cells, DNA and gametes make us what we are, to the structure and function of the heart. The course is delivered by experienced staff who have a real passion for the subject and want to ensure that you succeed. What do students do afterwards?

In recent years, our A-level history students have gone on to study a wide variety of subjects including history (of course!), Egyptology, archaeology, teaching or any other degree course.

### What do students do afterwards?

You might choose to move on to study a related science degree at university, with a view to securing a job in medicine, child care or research, among others. Other former students have pursued careers in nursing, dentistry and biochemistry, as well as more diverse careers like accountancy.



### How will I be assessed?

100% exam at the end of the course.

### What can I do to prepare?

Talk to your peers and relatives who have studied biology at the College recently, or come and speak to any of the science team - we are happy to help.

**“I have really enjoyed studying Biology. I have found learning about human anatomy particularly interesting, as you can form many links between mechanisms.”**



# NEWSLETTER

# MEMORY LANE

## Whitby Community College Question Time 2007

Students had the unique chance to question a panel on issues that affect their lives. Panellists included: Tania Exley Moore, Liberal Democrat candidate; John Burton, election agent to Tony Blair; local musician Robert Maseko; Martin Nairey, ex-head of prisons and the probation service and Barnardo's executive and Joe Cookson ex-student. Presented by Alex Thomson (Channel 4 News) the event took place at The Coliseum on Friday 23 March 2007.







# NEWSLETTER



## Upcoming Events

U-13 Boys Tennis at Pindar .....	Tuesday 16 April
Year 10 Rounders at Norton .....	Tuesday 16 April
Year 12 Parents' Evening .....	Tuesday 16 April, 4.00-6.00pm
Year 7 Royal Navy Assembly .....	Wednesday 17 April
U-13 Girls Cricket at Pickering .....	Wednesday 17 April
Year 1/2 Quad kids at WSF .....	Thursday 18/Friday 19 April
U-13 Girls Tennis at Pindar .....	Monday 22 April
District athletics trials at Malton School .....	Tuesday 23 April
Year 10 business pupils at CU Scarborough Business Day .....	Wednesday 24 April
Year 12 business students at CU Scarborough Business Day .....	Thursday 25 April
Year 8 Rounders v Eskdale (A) .....	Thursday 25 April
German Exchange .....	Sunday 28 April-Saturday 4 May
U-15 Tennis at Pindar .....	Monday 29 April
Year 9 trip to York St John University, 20 pupils from each school .....	Tuesday 30th April
Year 8 Parents' Evening .....	Tuesday 30 April, 4.00-6.00pm
GCSE Exams .....	May-June 2024 (final dates TBC)
Year 10 Rounders at Lady Lumley's .....	Thursday 2 May
Year 5/6 Tennis at WSF .....	Thursday 2 May
Bank Holiday .....	Monday 6 May
Year 8 HPV Vaccination .....	Tuesday 7 May
Year 7 Rounders at Lady Lumley's .....	Tuesday 7 May
U-15 Girls Tennis at Pindar .....	Tuesday 7 May
Year 8 Rounders at Malton .....	Thursday 9 May
Year 10 Employability Workshops from Inspiring Choices .....	Thursday 9 May-Thursday 6 June
Primary Tri Golf at CCW .....	Friday 10 May
Ryedale Whitby Partnership Athletics at Malton School .....	Tuesday 21 May



# NEWSLETTER

## Information

### Who do you need to contact?

#### Caedmon College Pastoral Team

<b>SENCo:</b>	Mrs Kirk
<b>Director of Learning Year 7, 8 &amp; 9:</b>	Mrs Harrison
<b>Assistant DoL Year 7:</b>	Mrs Cassell-Osowski
<b>Pastoral Managers Year 7, 8 &amp; 9:</b>	Mrs Wood Miss Clarkson
<b>Director of Learning Year 10 &amp; 11:</b>	Mrs Gordon
<b>Assistant DoL Year 7:</b>	Mrs Ruberry
<b>Pastoral Managers Year 10 &amp; 11:</b>	Mr Taylor Mrs Ross
<b>Email for all is:</b>	post@ccwhitby.org

#### Eskdale School Pastoral Team:

<b>Deputy Head:</b>	Mr Dixon
<b>Inclusion Manager /SENDCO:</b>	Mrs Kirk
<b>Head of Year 11:</b>	Mrs Scales
<b>Head of Year 10:</b>	Mr Raw
<b>Head of Year 7, 8 &amp; 9:</b>	Mrs Bradley
<b>Pastoral support:</b>	Mrs Wilson
<b>Email for all is:</b>	post@eskdale-school.co.uk

### Term Dates

<b>Half term 5</b>	Tuesday 9 April – Friday 24 May
<b>Bank Holiday</b>	Monday 6 May
<b>Half term 6</b>	Monday 3 June – Friday 19 July
	<i>(Year 11 off roll at end of June)</i>

